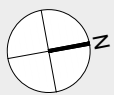
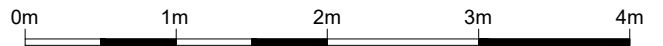
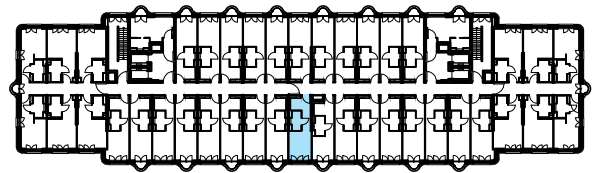


Wohnung 6.15

Wohnen	14,53 m <sup>2</sup>
Küche	4,53 m <sup>2</sup>
Bad	3,39 m <sup>2</sup>

Gesamtfläche 22,45 m<sup>2</sup>



M 1:50

6. Obergeschoss  
6.15  
Krautstraße 30, 10243 Berlin  
Februar 2021



Planungsteam Balzke Palinske GmbH