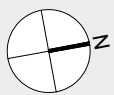
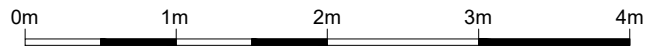
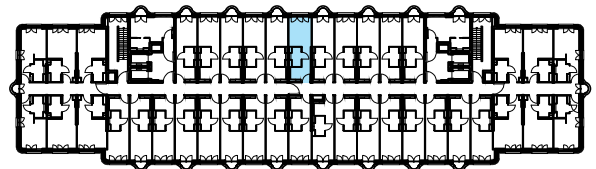


Wohnung 6.36

Wohnen	14,53 m ²
Küche	4,53 m ²
Bad	3,39 m ²

Gesamtfläche 22,45 m²



M 1:50

6. Obergeschoss
6.36
Krautstraße 30, 10243 Berlin
Februar 2021



Planungsteam Balzke Palinske GmbH