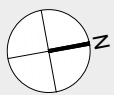
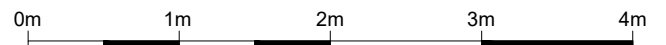
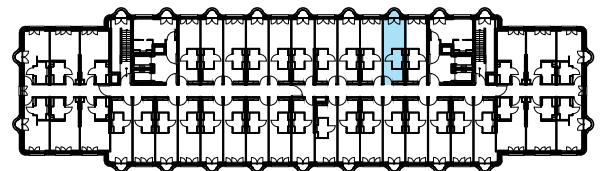


Wohnung 11.32

Wohnen	14,23 m ²
Küche	4,44 m ²
Bad	3,39 m ²
Balkon (A/2)	0,53 m ²
Gesamtfläche	22,59 m²



M 1:50

11. Obergeschoss
11.32
Krautstraße 30, 10243 Berlin
Februar 2021



Planungsteam Balzke Palinske GmbH